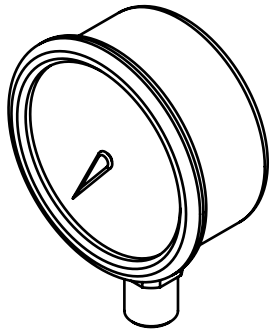
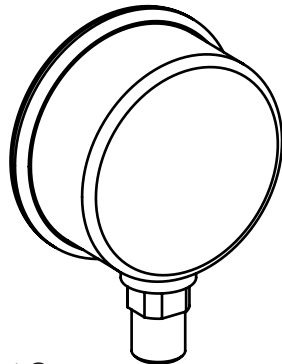


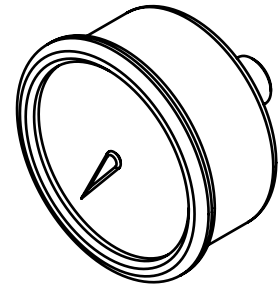
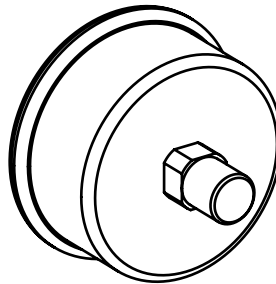
## Liquid Filled Pressure Gauges



“BM” Bottom Mount Gauge



“RM” Rear Mount Gauge



### DESCRIPTION:

Glycerin filled pressure gages allow accurate psid monitoring for flow adjustment of separators and recovery tanks. These gauges are suitable for environments compatible with copper alloy wetted parts where vibration or pressure pulsation occur and for gaseous or liquid media that will not obstruct the pressure system.

SPECIFICATIONS						
MODEL	PRESSURE RANGE	GAUGE DIA.	MOUNTING/SIZE	MATERIAL		OPERATING TEMPERATURE
				GAUGE	THD. MTG. STEM	
RM-60	0-60 PSI	2-1/2"	REAR 1/4"NPT	STAINLESS STEEL	BRASS	AMBIENT: -40°F TO 160°F (-40°C TO 71°C) MEDIA: max. 140°F (+60°C) (TEMP. RANGE -4°F TO 140°F)
RM-160	0-160 PSI					
BM-60	0-60 PSI		BOTTOM 1/4"NPT			
BM-160	0-160 PSI					

### STANDARD MATERIALS:

**Connection:** copper alloy

**Movement:** copper alloy

**O-Ring:** EPDM

**Window:** Polycarbonate

**Bourdon Tube:** copper alloy

**Case:** 304 stainless steel

**Window Gasket:** Buna-N

**Case Filling:** glycerin

