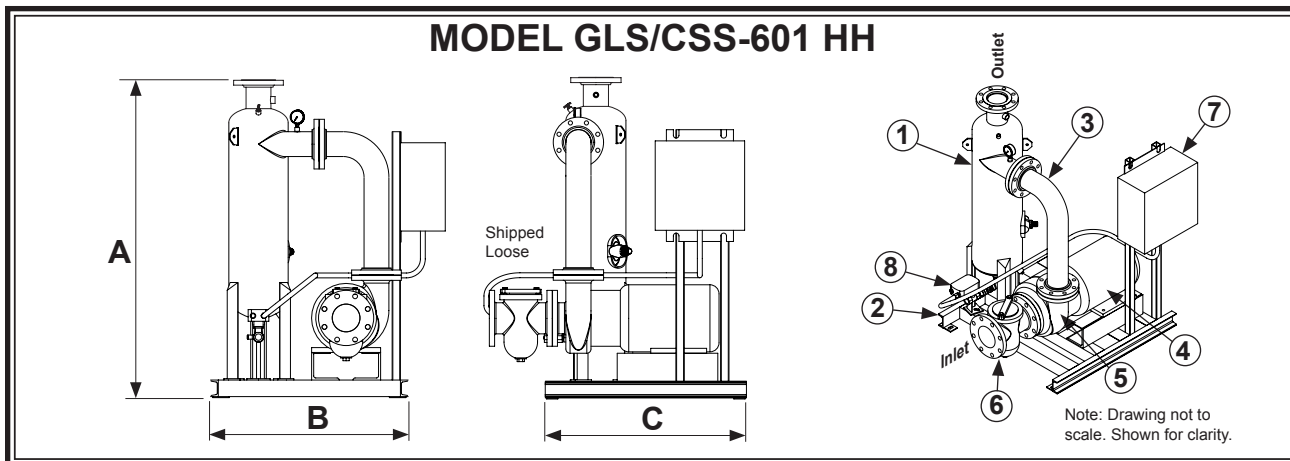


SYSTEM MODEL		GLS-600-HH	CSS-600-HH
	Design Flow Rate, GPM	825@40 TDH	825@80 TDH
Item 1	Separator Model	CS-6T-FLG Carbon Steel, Powder Coated	
Item 2	Frame Construction	Carbon Steel, Powder Coated	
Item 3	Pipe Assembly	Carbon Steel, Rust Inhibitor Primer with Enamel Finish	
<b>MOTOR 460 VAC TEFC</b>			
Item 4	Horsepower	15 hp	20 hp
	Approximate Amps @ 460V	21 amps	27 amps
	RPM	3500	1750
<b>PUMP</b>			
Item 5	Pump Casing	Cast Iron	
	Pump Impeller	Bronze	
	Std. Mechanical Seal	VITON Elastomer, Silicon Carbide Seat, Carbon Rotary	
<b>BASKET STRAINER (Optional)</b>			
Item 6	Body Construction	Cast Iron	
	Internal Screen	1/4" Perforated 304 Stainless Steel	
	Connection Type	Class 150 Flange	
<b>CONTROL PANEL (UL listed and labeled, manufactured to UL-508A Std.)</b>			
Item 7	Enclosure	NEMA 4 Powder Coated, Watertight, UL listed and CSA approved	
	Electrical Components	Starter with Thermal Overload, HOA, 460/120 Transformer with Circuit Breakers, Pump "RUN" Light, Lockable Door Disconnect, Magnetic Contactor, Purge Timer, Manufactured with all UL listed & CSA approved electrical components.	
<b>PURGE VALVE (Requires Power to Open and Power to Close. Must Close Manually if Open During a Power Outage)</b>			
Item 8	Actuator, Motorized	120 VAC 60Hz	
	Connection Type	1-1/2" Female NPT, Ball Valve	
<b>SPECIFICATIONS</b>			
	Dim "A"	68-1/2"	68-7/8"
	Dim "B"	42"	50-1/2"
	Dim "C"	42"	40"
	Max. Inlet P.S.I.	100	
	Max. Operating P.S.I.	150	
	Max. Operating Temp.	100°F	
	Inlet (Class 150 Flange)	5"	6"
	Outlet (Class 150 Flange)	6"	
	Shipping Weight	1300 Lbs	

Note: Dimensions are approximate and are for reference only. Dimensions subject to change without notice. Weights are approximate.



SYSTEM MODEL		GLS-601-HH	CSS-601-HH
	Design Flow Rate, GPM	1100@40 TDH	1100@80 TDH
Item 1	Separator Model	CS-6T-FLG Carbon Steel, Powder Coated	
Item 2	Frame Construction	Carbon Steel, Powder Coated	
Item 3	Pipe Assembly	Carbon Steel, Rust Inhibitor Primer with Enamel Finish	
<b>MOTOR 460 VAC TEFC</b>			
Item 4	Horsepower	20 hp	30 hp
	Approximate Amps @ 460V	27 amps	40 amps
	RPM	1750	
<b>PUMP</b>			
Item 5	Pump Casing	Cast Iron	
	Pump Impeller	Bronze	
	Std. Mechanical Seal	VITON Elastomer, Silicon Carbide Seat, Carbon Rotary	
<b>BASKET STRAINER (Optional)</b>			
Item 6	Body Construction	Cast Iron	
	Internal Screen	1/4" Perforated 304 Stainless Steel	
	Connection Type	Class 150 Flange	
<b>CONTROL PANEL (UL listed and labeled, manufactured to UL-508A Std.)</b>			
Item 7	Enclosure	NEMA 4 Powder Coated, Watertight, UL listed and CSA approved	
	Electrical Components	Starter with Thermal Overload, HOA, 460/120 Transformer with Circuit Breakers, Pump "RUN" Light, Lockable Door Disconnect, Magnetic Contactor, Purge Timer, Manufactured with all UL listed & CSA approved electrical components.	
<b>PURGE VALVE (Requires Power to Open and Power to Close. Must Close Manually if Open During a Power Outage)</b>			
Item 8	Actuator, Motorized	120 VAC 60Hz	
	Connection Type	1-1/2" Female NPT, Ball Valve	
<b>SPECIFICATIONS</b>			
	Dim "A"	68-1/2"	68-7/8"
	Dim "B"	42"	50-1/2"
	Dim "C"	42"	40"
	Max. Inlet P.S.I.	100	
	Max. Operating P.S.I.	150	
	Max. Operating Temp.	100°F	
	Inlet (Class 150 Flange)	8"	6"
	Outlet (Class 150 Flange)	6"	
	Shipping Weight	1300 Lbs	

Note: Dimensions are approximate and are for reference only. Dimensions subject to change without notice. Weights are approximate.

### Section 5, Page 11

REV. 12/10