

Project Profile

Major Georgia Poultry Processor

edge™ Significantly Reduces Wastewater Treatment Costs

APPLICATION

Two 1200 GPM Dissolved Air Flotation systems.

THE PROCESS

Dissolved air flotation (DAF) is a water treatment process that clarifies wastewater by the removal of suspended matter such as oil, grease or solids. The removal is achieved by dissolving air in the water or wastewater under pressure and then releasing the air at atmospheric pressure in a flotation tank or basin. The released air forms tiny bubbles which adhere to the suspended matter causing the suspended matter to float to the surface of the water where it may then be removed by a skimming device.

THE PROBLEM

Polymers, and coagulant are used in significant quantities to improve effluent quality and thicken sludge. Chemical costs and sludge hauling costs are very high for poultry processing operations.

CUSTOMER PROFILE

One of the nation's leading poultry companies. The brand is the number-one brand of premium chicken in the Eastern U.S. and is synonymous with quality products around the globe.

SOLUTION

Griswold Water Systems provided two 12" Edge electronic water treatment systems and installed them in the DAF feed lines prior to chemical injection. The Edge applies powerful energy pulses to the wastewater which promote flocculation and coagulation electronically.

EDGE RESULTS

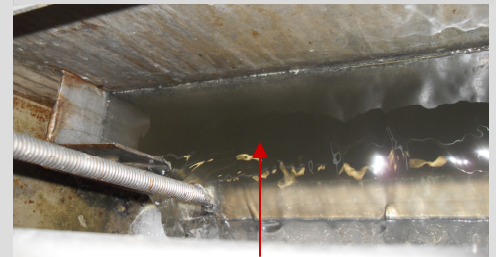
- Reduced Coagulant 2,000 lbs/week
- Improved effluent BOD 42%
- Reduced sludge loads 5 loads/ week
- Saves \$5,000 per week



Two 12" EDGE Installed in DAF Feed Lines



Control DAF Effluent



EDGE Treated DAF Effluent



Control Sludge Wet EDGE Sludge Dry



Tel: 386-663-3370
Cell: 386-235-0977

GRISWOLD WATER SYSTEMS